

# caracole



## AVONDALE

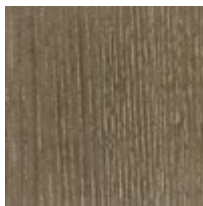
c023-417-062

**COLLECTION:** AVONDALE

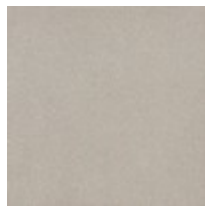
**DIMENSIONS:** 36W x 19D x 30H

This graceful nightstand pairs beautifully with the bed in this collection. Quartered Ash veneer has been inlaid in a chevron pattern and finished in Elegant Linen to create a large three-drawer piece that's the perfect height. The drawers open with custom contemporary oval metal pulls to reveal a glistening Pearl finish inside. Contemporary tapered feet complete the attractiveness of this serpentine-shaped piece.

### FINISH:



Elegant Linen



Soft Silver Paint