

caracole



ROUND DINING TABLE

c022-417-202

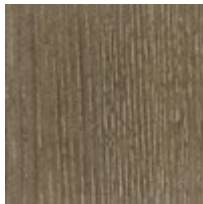
COLLECTION: AVONDALE

DIMENSIONS: 62 dia x 30H

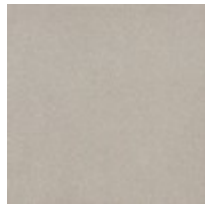
Round dining tables are made for good conversations. This piece has lightly figured Quartered Ash veneer set in a starburst pattern, finished in Elegant Linen, and detailed with a Soft Silver Leaf silkscreen stencil around the top. Four curving, tulip-shaped legs meet at a round base adding immense interest to this piece. This table comfortably seats 6 people.

CONSTRUCTION: Bottom of apron to floor: 27".

FINISH:



Elegant Linen



Soft Silver Paint