

caracole



SOFA

c010-016-012-a

COLLECTION: ADELA

DIMENSIONS: 105W x 44D x 33H

Punctuated by carved, ribbon-detailed "wings" that cap the edges of each arm, this sofa has a sleek profile with a graceful inward curve creating a long line from arm to arm. The design is accented by an exposed frame that is detailed in Blush Taupe; however, similarities to cabriole sofas of the past end there. The sofa is upholstered in a fashionable, creamy boucle fabric that has a soft shimmer. The dramatic cutout in the back lends a sculptural tone to the piece. A beautiful quilted pattern wraps the sofa's exterior. A single curvaceous bench seat lends plush comfort to this generously proportioned piece that is accented with six contrasting throw pillows in textured tones ranging from violet to lavender.

CONSTRUCTION: Springdown cushion. | No sag seat. | Feather down pillows.

FINISH:

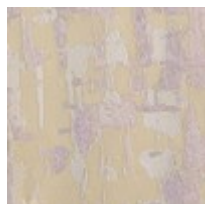


Blush_Taupe

FABRIC:



Body Fabric: 2531-34CC



2-21"x21" Pillows
8225-16CC



Pillow Fabric: 4-
20"x20" Pillows
Front-5106-16CC,
Back and Welt-
2531-34CC