

# caracole



## SOFA

b090-282-a

**COLLECTION:** EVERLY

**DIMENSIONS:** 99.75W x 44D x 37.75H

The Everly Sofa is the epitome of romance in buff colored velvet. It has a deep seat and arms that flair to a beautiful curve. The signature arms are upholstered in deep button tufting. This sofa gracefully arches its back in comfort as exposed, Bronzed Ebony-finished wood glides along the top rail of the sofa's back, rising to a soft scroll in the center of the piece. Contrasting welting around the seat pillows and brushed nickel nails on the front of the piece accentuate its curves. Buff colored satin pillows add to its luxury and high style. Conical legs have brushed nickel ferrules for a dressed up finish.

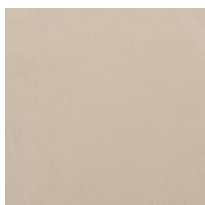
**CONSTRUCTION:** Springdown cushion. | No sag seat. | Feather down pillows.

### FINISH:

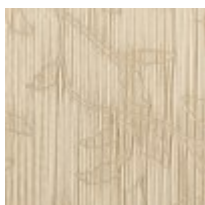


Bronzed\_Ebony

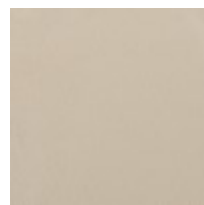
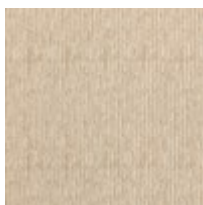
### FABRIC:



Body Fabric: 2301-

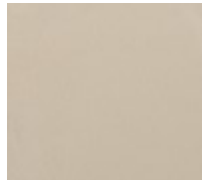


Pillow Fabric: 2-23"" x



35CC

23''' Pillows 5103-  
35CC



2-24''' x 24''' Pillows  
3115-35CC with  
Contrast Welt 2301-  
35CC



1-24''' x 24''' Pillow  
2301-35CC with  
Contrast Welt 3115-  
35CC