

# caracole



## ACCENT CHAIR

9250-014-a

**COLLECTION:** CHERYL

**DIMENSIONS:** 32.75W x 37.25D x 35.75H

With gently sloping arms and a tall supportive back, this accent chair introduces classic style and comfort to modern and traditional interiors. Its loose seat and back cushion are expertly tailored in a lustrous crushed

velvet, beautifully complemented by curved arms and legs in a shimmering Nickel Paint finish. Pairs perfectly with our Cheryl sofa and chair.

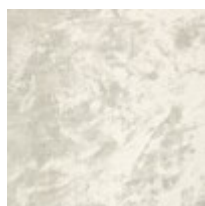
**CONSTRUCTION:** No sag seat. | Plush poly foam cushion.

**FINISH:**



Nickel\_Paint

**FABRIC:**



Body Fabric: 2799-88CC