

caracole



CHAIR

9250-004-a

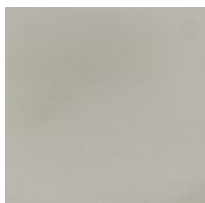
COLLECTION: CHERYL

DIMENSIONS: 36.5W x 36.75D x 31.5H

Perfect for reading nooks and larger conversation areas, Cheryl's enveloping silhouette invites comfort and easy elegance in a neutral performance fabric. A smooth upholstered back and loose seat cushion are beautifully balanced by slender fluted legs with a subtle taper. Carved wood panels lend a distinctive detail in a nature-inspired pattern, reminiscent of sand ripples made by wind and waves. Pairs perfectly with our Cheryl sofa and accent chair

CONSTRUCTION: No sag seat. | Plush poly foam cushion. | Feather down pillows.

FINISH:



Nickel_Paint

FABRIC:



Body Fabric: 2798-
71CC-P
Performance