

# caracole



## ARCHIPELAGO CHAIR

uph-422-037-a

**COLLECTION:** CARACOLE UPHOLSTERY

**DIMENSIONS:** 40W x 37D x 28H

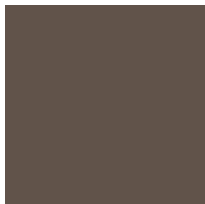
Part of our Archipelago seating collection, this armchair introduces a relaxed sit with a refined aesthetic. Upholstered in a neutral twill fabric with a faux leather accent, this sheltering silhouette is elevated on an exposed Bourbon Glaze wood base with metal legs in a Deep Bronze finish. Collection also includes a right- and left arm-facing loveseat, and an armless chair.

**CONSTRUCTION:** 8-way hand tied seat. | Spring down cushion. | Feather down pillow.

### FINISH:



Bourbon Glaze



Deep Bronze

### FABRIC:

Body Fabric: 2893-  
53CC-P  
Performance

Contrast Fabric  
9186-53CC-P  
Performance