

caracole



ALLURE

uph-416-012-a

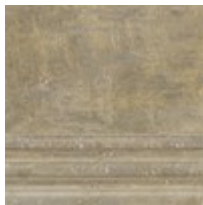
COLLECTION: CARACOLE UPHOLSTERY

DIMENSIONS: 102.25W x 42D x 31H

Allure gracefully blends textures and finishes into a sofa with classic, clean lines. This piece easily fits into more casual environments with its mix of three highly textured woven fabrics, all in grey tones, and exposed wood base. It is equally dressy for more formal environments with a classic woven trim, brushed nickel nails and a shimmering soft metallic Artistique finish. Perfect for curling up on a cloudy day in a window nook or luxuriously comfortable floating in front of a fire, Allure's back is as beautiful as its front.

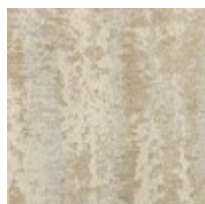
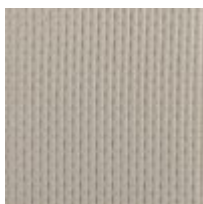
CONSTRUCTION: Spring down cushion. | 8-way hand tied seat. | Feather down pillows.

FINISH:



Artistique

FABRIC:





Pillow Fabric: 2-18" x
18" Pillows with 2"
Boxing 5102-71 CC
with Contrast Welt
2493-71 CC



Body Fabric: Outside
and Box Back
Cushions 3114-
71 CC, Inside, Seat
Cushions, Front Rail,
and Boxing on Back
Cushions 2493-
71 CC, Trim around
Base and Back
Cushions U00451