

# caracole



## ARM IN ARM

uph-021-132-a

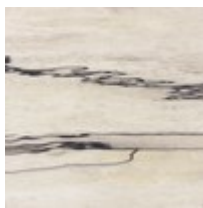
**COLLECTION:** CARACOLE UPHOLSTERY

**DIMENSIONS:** 27W x 35.25D x 30.5H

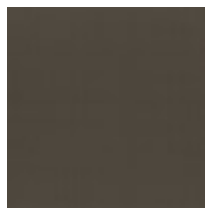
Tactile and intriguing, this streamlined accent chair mixes the rich aesthetic of leather with the found beauty of wood and Brushed Deep Bronze metal. Bent metal legs create a shadow box effect, framing leather saddlebag arm caps and rails crafted in bleached white printed spalted maple with dark, marble-like veining. Offers everyday comfort with luxe appeal, hand-tailored in a platinum-colored micro-chenille performance fabric with a silky hand.

**CONSTRUCTION:** 8-way hand tied seat. | Springdown cushion.

### FINISH:



Snowcap Organic



Brushed Deep  
Bronze

**FABRIC:**



Body Fabric: 2883-  
77CC-P  
Performance,  
Leather Arm Panels  
9178-78CC