

# caracole



## CONTRAST TALL BOOKSHELF

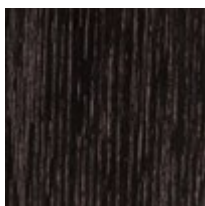
m141-022-813

**COLLECTION:** MODERN PRINCIPLES

**DIMENSIONS:** 65W x 16D x 80.75H

A striking contrast of material, tone and texture emphasizes the effortless elegance of symmetry and repetition. Open pore travertine lends an organic element, punctuated by quarter sawn oak shelves and dividers in a dramatic Cinder finish. Its tall, clean-lined form adds height to a room and a sturdy foundation for showcasing collectibles, books and decor.

**FINISH:**



Cinder

