

caracole



BOUNDLESS CHAIR

m100-419-032-a

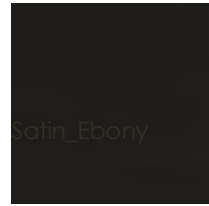
COLLECTION: MODERN EDGE

DIMENSIONS: 30W x 35.75D x 42.75H

Featuring style that knows no boundaries, this unique chair is rich in color, material and presence. It represents an artist's interpretation of the classic wing chair and is destined to shine in any setting. Its bold mo-velvet cover is featured in a rich shade of eggplant that shimmers and shines when it catches the light. A coordinating amethyst velvet welt adds another layer of distinction and is complemented with a Satin Ebony finish on the chair's wood trim. With the power to instantly modernize a space, this distinctive chair works beautifully on its own or as a pair across from a sofa or fireplace.

CONSTRUCTION: Blendown cushion. | No sag seat.

FINISH:



Satin_Ebony

FABRIC:



Body Fabric: 2681-
21CC, Contrast Welt
2680-18CC