

# caracole



## ALLOY COCKTAIL TABLE

cla-423-401

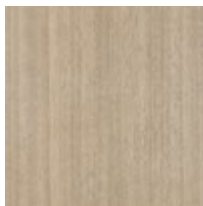
**COLLECTION:** CARACOLE CLASSIC

**DIMENSIONS:** 56W x 34D x 17H

Exquisite details and a mix of metals draw attention to this large cocktail table, inspired by the bent metal work of notable French designer Jean Prouvé. Features an elegant yet durable Crème Travertine stone top, softened by an ogee detail and canted corners. Ornamental legs are crafted in a fusion of Deep Bronze, Brushed Gold, and Brushed Stainless metals. Finished in Dry Martini to accentuate the natural beauty of Koto veneers, a shelf underneath offers ample open space for displaying art books and objects.

**CONSTRUCTION:** Top is a natural stone. Natural variations in color, veining and spotting will vary from piece to piece. Natural materials are porous in nature and care should be taken to protect the surface.

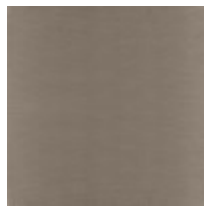
### FINISH:



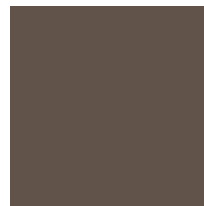
Dry Martini



Brushed Gold



Brushed Stainless



Deep Bronze