

# caracole



## EMPIRE

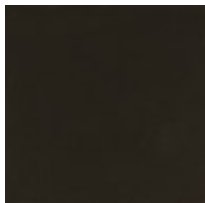
cla-422-462

**COLLECTION:** CARACOLE CLASSIC

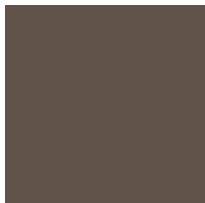
**DIMENSIONS:** 42W x 17D x 38H

With subtle notes of art nouveau, this exquisite chest celebrates the art of craft and materiality, inspired by iconic jewelry designs of the 20th Century. Door fronts wrapped in a Soft Silver Leaf make an alluring and tactile statement, minimally adorned with nail accents in a Nickel finish. A green marble top adds a note of luxe and sturdy top surface, complemented by sculptural Deep Bronze custom hardware for extra embellishment.

### FINISH:



Dark Chocolate



Deep Bronze



Soft Silver Leaf

