

# caracole



## SHOWCASE

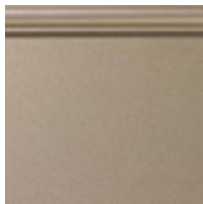
cla-421-533

**COLLECTION:** CARACOLE CLASSIC

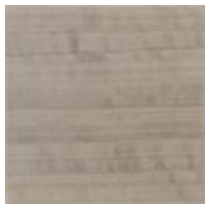
**DIMENSIONS:** 84W x 20D x 26H

A nod to the exquisite beauty of dyed eucalyptus, this media console elegantly mixes materials and finishes with an eye-catching door pull in shimmering Satin Nickel. Its streamlined design offers generous closed storage, with soft-close doors neatly concealing adjustable shelves and two hidden drawers. Features cutouts in the back for wire management and adjustable levelers

### FINISH:



Silver Shadow



Fawn