

caracole



FIRST COURSE

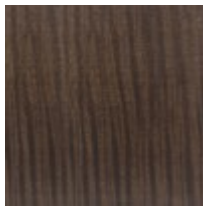
cla-421-203

COLLECTION: CARACOLE CLASSIC

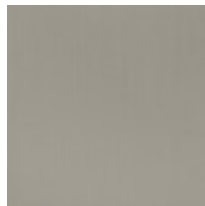
DIMENSIONS: 88W x 42D x 30H

Highlighting the natural beauty of figured sycamore, this extension dining table is testament to the architectural design concept, less is more. A simple, yet refined use of materials relays its minimalist intention, with a richly grained wood top and interlocking metal inlay legs in Satin Nickel. A 24" leaf makes it easy to extend, so there's always room for more at the table.

FINISH:



Brunette



Satin Nickel