

# caracole



## DO NOT DISTURB - CAL KING

cla-419-141

**COLLECTION:** CARACOLE CLASSIC

**AVAILABLE AS:**

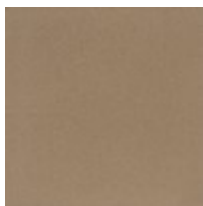
Queen  
California King  
King

**DIMENSIONS:** 87W x 91.5D x 56H

Start each day in an extraordinary way by waking up in this swoon-worthy bed. Classic yet updated, it's distinguished by wings that wrap around in an armchair manner. Completely upholstered in a sea-inspired blue fabric, it features a richly tufted diamond-pattern headboard that adds plush appeal and is inspired by the timeless character of a tufted English arm sofa. At the headboard, you'll find wooden legs finished in Golden Shimmer while clear acrylic legs capped with metal ferrules highlight the footboard. This designer bed seamlessly blends the best of old and new to create an amazing focal point for the bedroom.

**CONSTRUCTION:** Mattress Opening: 74" x 86". | Floor to top of slat: low setting 9" high setting 11.75" (Adjustable metal brackets). | Floor to bottom of side rail 7". | Floor to top of side rail: 15". | Arm height on wings: 29".

**FINISH:**



Golden\_Shimmer

**FABRIC:**



2680-52CC-P  
Performance