

# caracole



## TRIPLE WRAP

cla-020-062

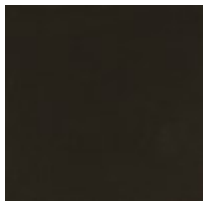
**COLLECTION:** CARACOLE CLASSIC

**DIMENSIONS:** 34W x 18D x 25H

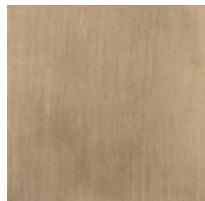
A brilliant bedside companion, this clean-lined nightstand merges minimalism with elements of mid-century modern design. Framed in a contrasting Dark Chocolate finish, three soft-closing drawers feature textured vinyl fronts, embossed with a rivulet pattern like rain trickling down a windowpane. Casting a warm glow, metal trim in Champagne Gold artfully incorporates rounded pulls to seamlessly frame each drawer. Features a USB port at the back along the top for charging convenience.

**CONSTRUCTION:** Drawer Front: 6.75H x 31.5W | Interior Dimensions: | Between Sides: 30 | Back of front to front of back: 14.25 | Top of bottom to top of side: 4.5 | Undermount Soft Close Guides

### FINISH:



Dark Chocolate



Champagne Gold

### FABRIC:

9170-46CC